



Worldwide Leading Composite Manufacturer



www.sentaiwpc.net





REGAL  **BOARD**®


Woodlike Vintage Composite Decking

Every moulded wood grain is finely carried out by experienced artisans with much meticulousity, and will never be alike with any other product in the market.

REGALBOARD®

Woodlike Vintage Composite Decking





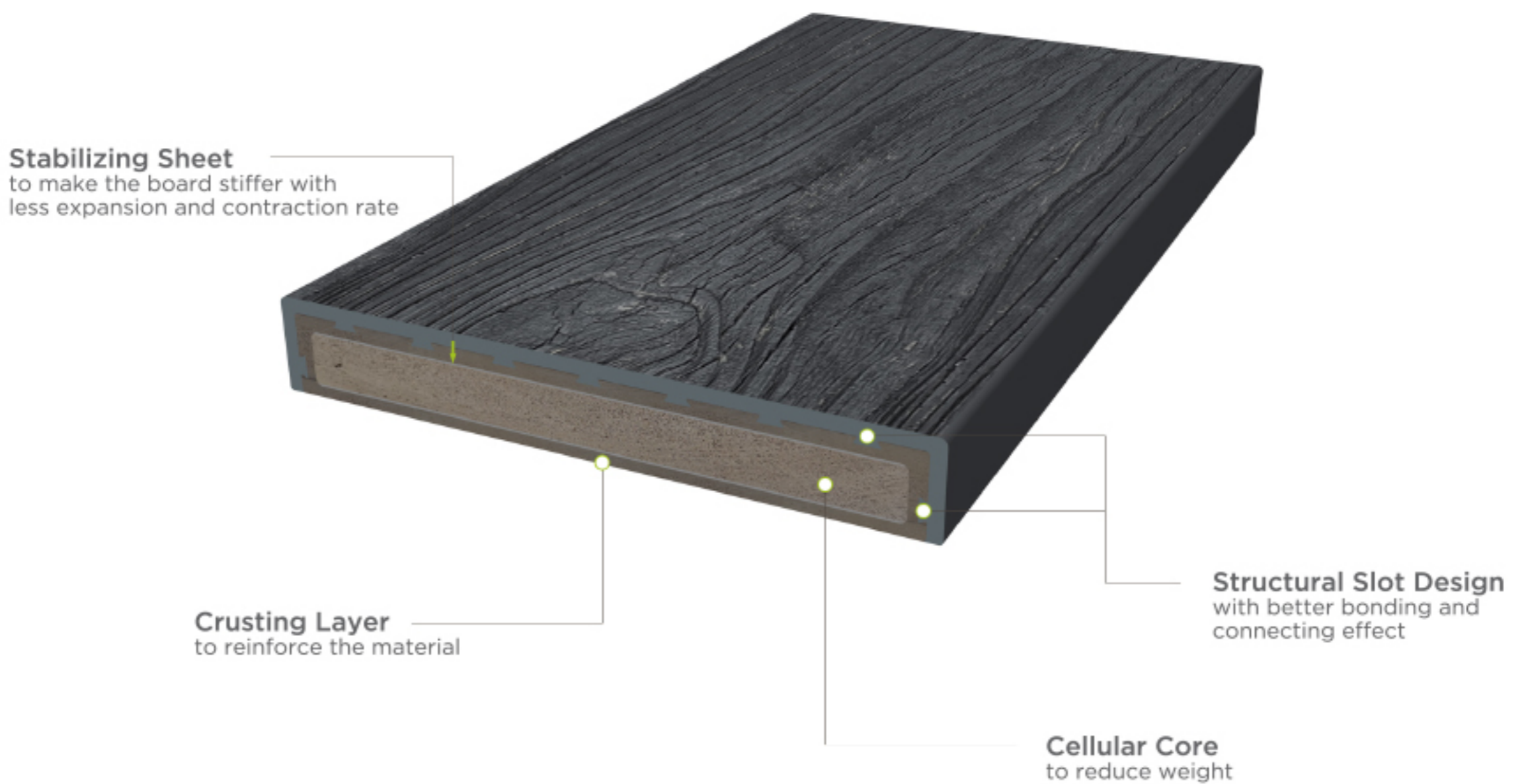
Refined Grain Collection

Distinctive grain pattern, customize a terrace that only belongs to you

By moulding from real wood species, we duplicate the grain pattern to ensure every piece of the board is unique and rare, and meanwhile achieve the minimum repeatness appearance.

What is Regalboard?

Regalboard employs the latest surface treatment technology to deliver the most unique and natural decking outlooks with superior performance in all dimensions.



Real wood

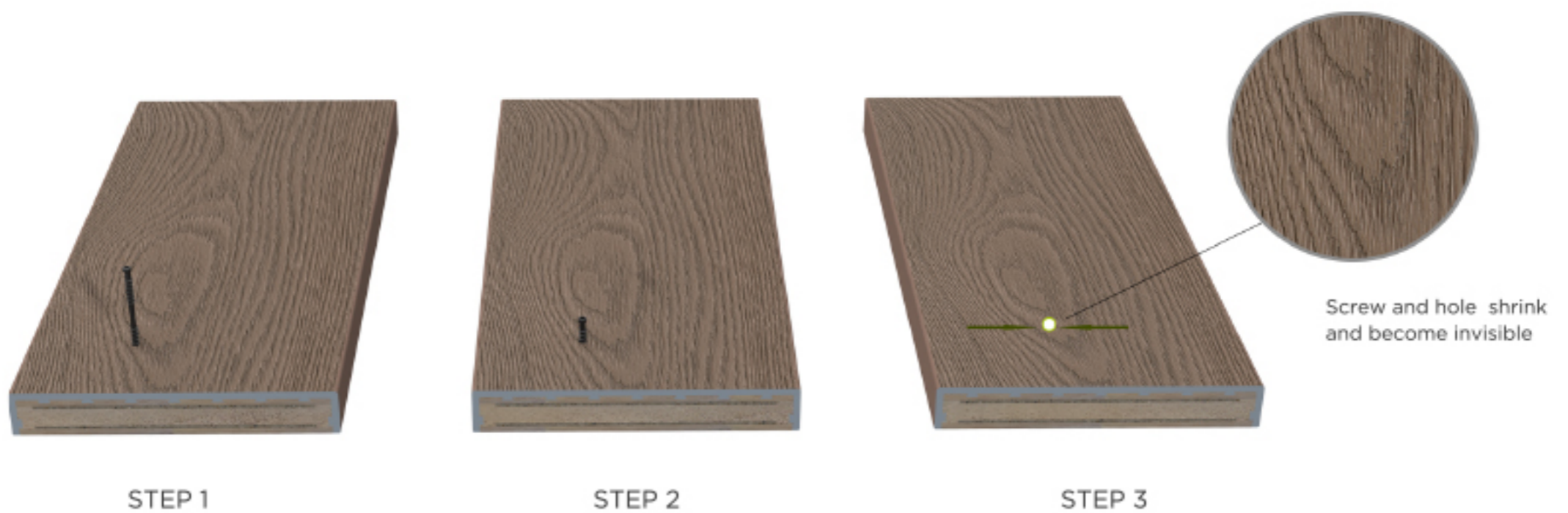
Regalboard

Regalboard, just more than wood
we do not fell wood, but create wood-like building material

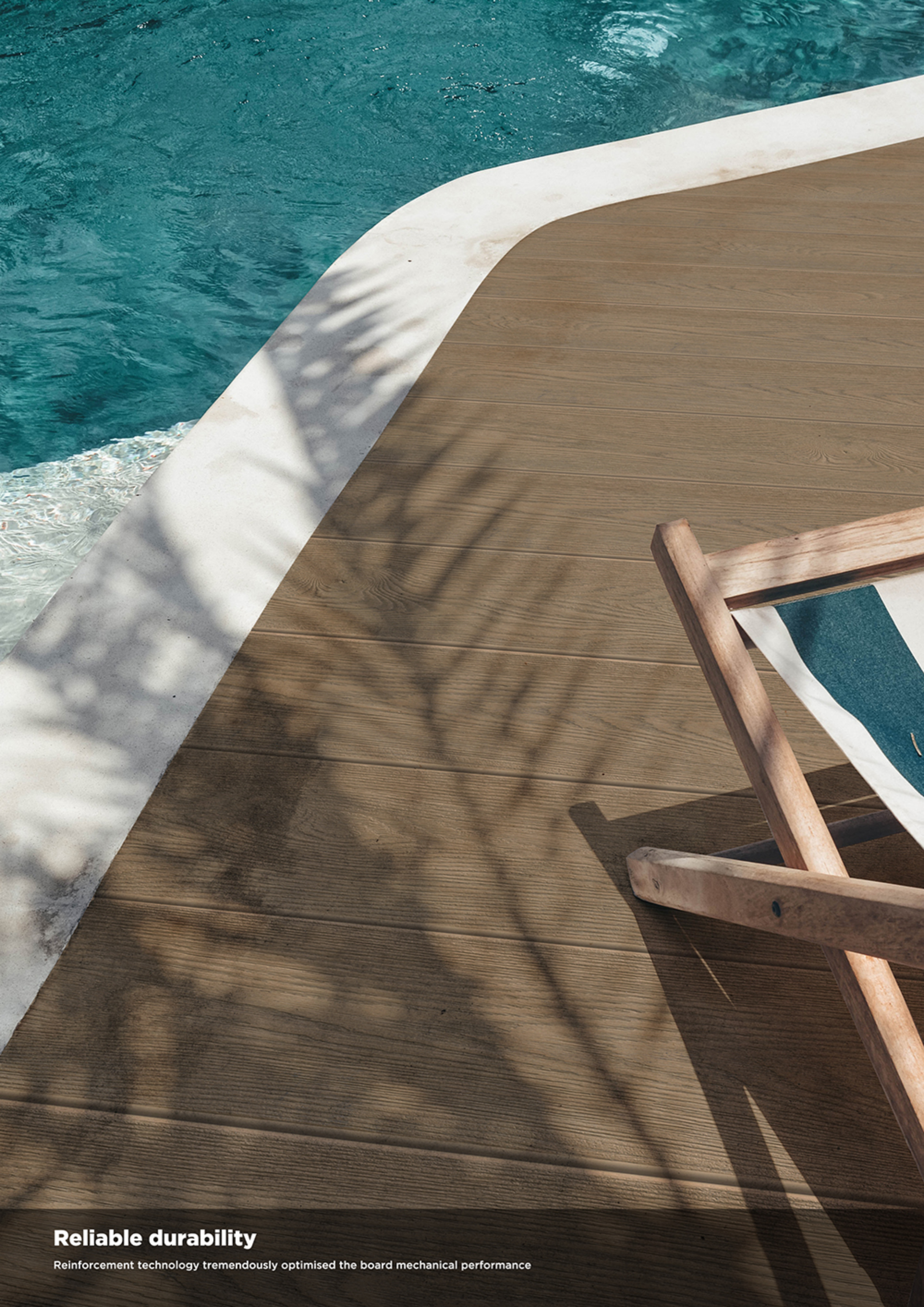


Invisiable Screwing Solution

make your deck looks nicer and installation easier



Thanks to the special engineered PU material, the fixing screws can be absorbed without head shown



Reliable durability

Reinforcement technology tremendously optimised the board mechanical performance



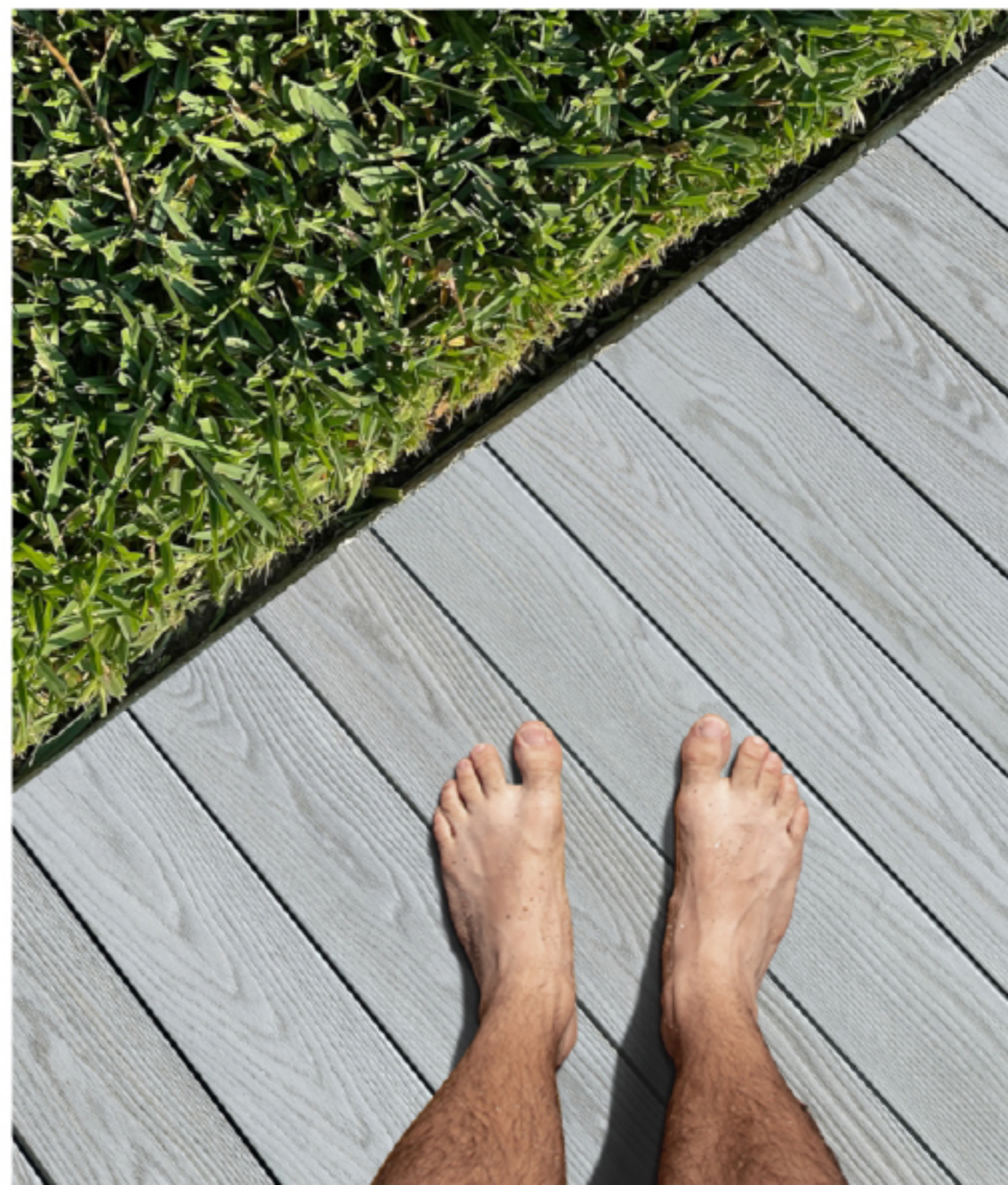
Low-weight Low-maintenance

Regalboard, with special engineered soft cap, no splinter or other drawbacks like scratches, or hurts will occur to pedestrians even when they walk on it barefooted. Also the particular structure design and reinforcement technology enable lighter weight and greater durability.

ANTI-SLIPPERY FRIENDLY TO BAREFOOT

**Engineered polyurethane
material with soft surface**

The soft surface material makes it easy to create enough friction when people walking on it together with the moulded grain pattern, the slip resistance performance can really surpass other product.





Why Choose Us?

CHOOSE SUSTAINABLE DECKING

1. Reinforced core material with higher loading ability

Thanks to the well master of the crusting technology, we achieved to make the core material weight lighter, while keeping the board with superior mechanical performance, like anti-bending and etc.

2. Cap material More durable

By adopting the speical engineered polyurethane material, we are able to get a soft surface while keeping up with extremely good anti-abrasion and anti-scratch performance effect.

3. Bonding performance between cap and core Tighter and Safer

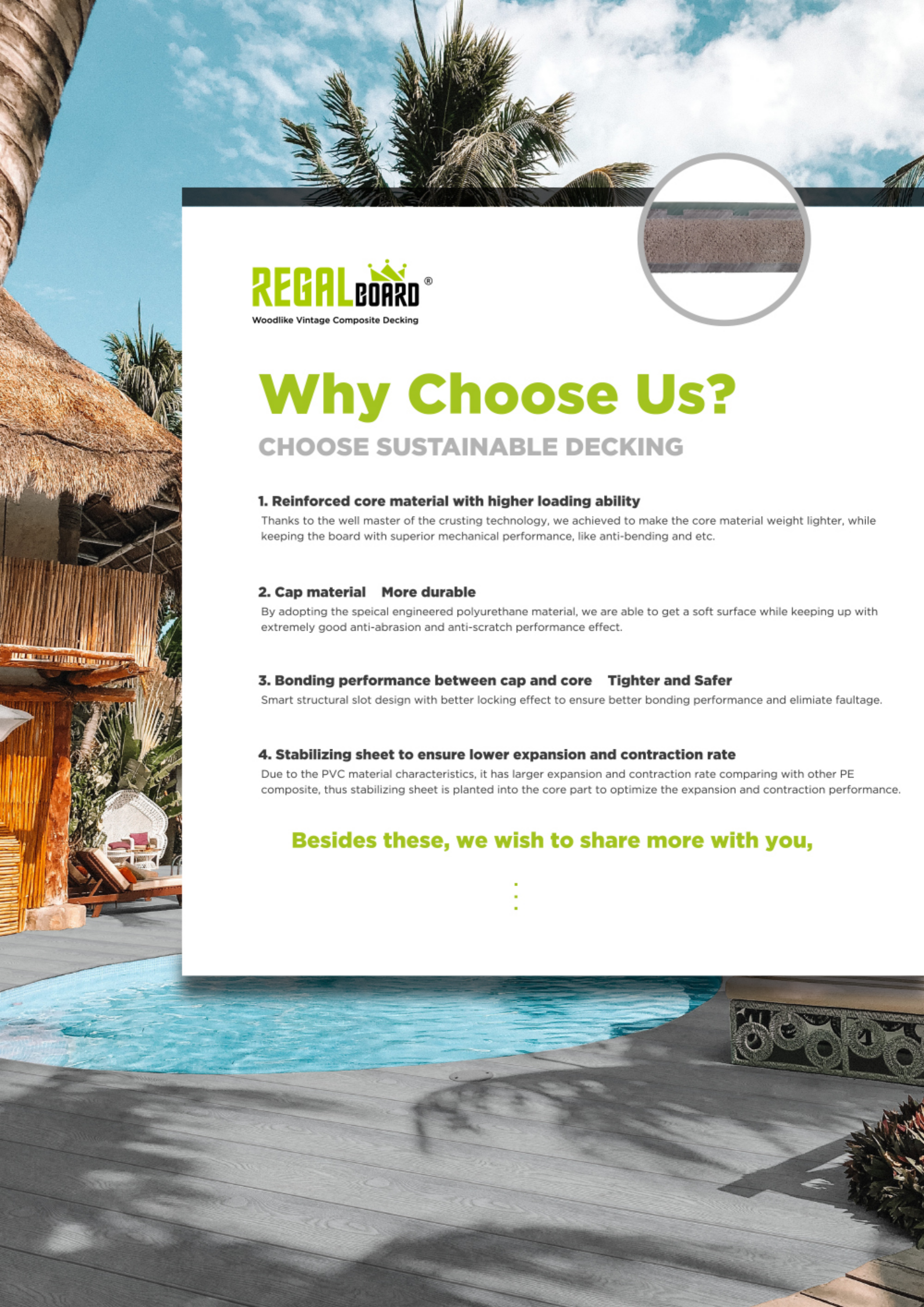
Smart structural slot design with better locking effect to ensure better bonding performance and elimiate faultage.

4. Stabilizing sheet to ensure lower expansion and contraction rate

Due to the PVC material characteristics, it has larger expansion and contraction rate comparing with other PE composite, thus stabilizing sheet is planted into the core part to optimize the expansion and contraction performance.

Besides these, we wish to share more with you,

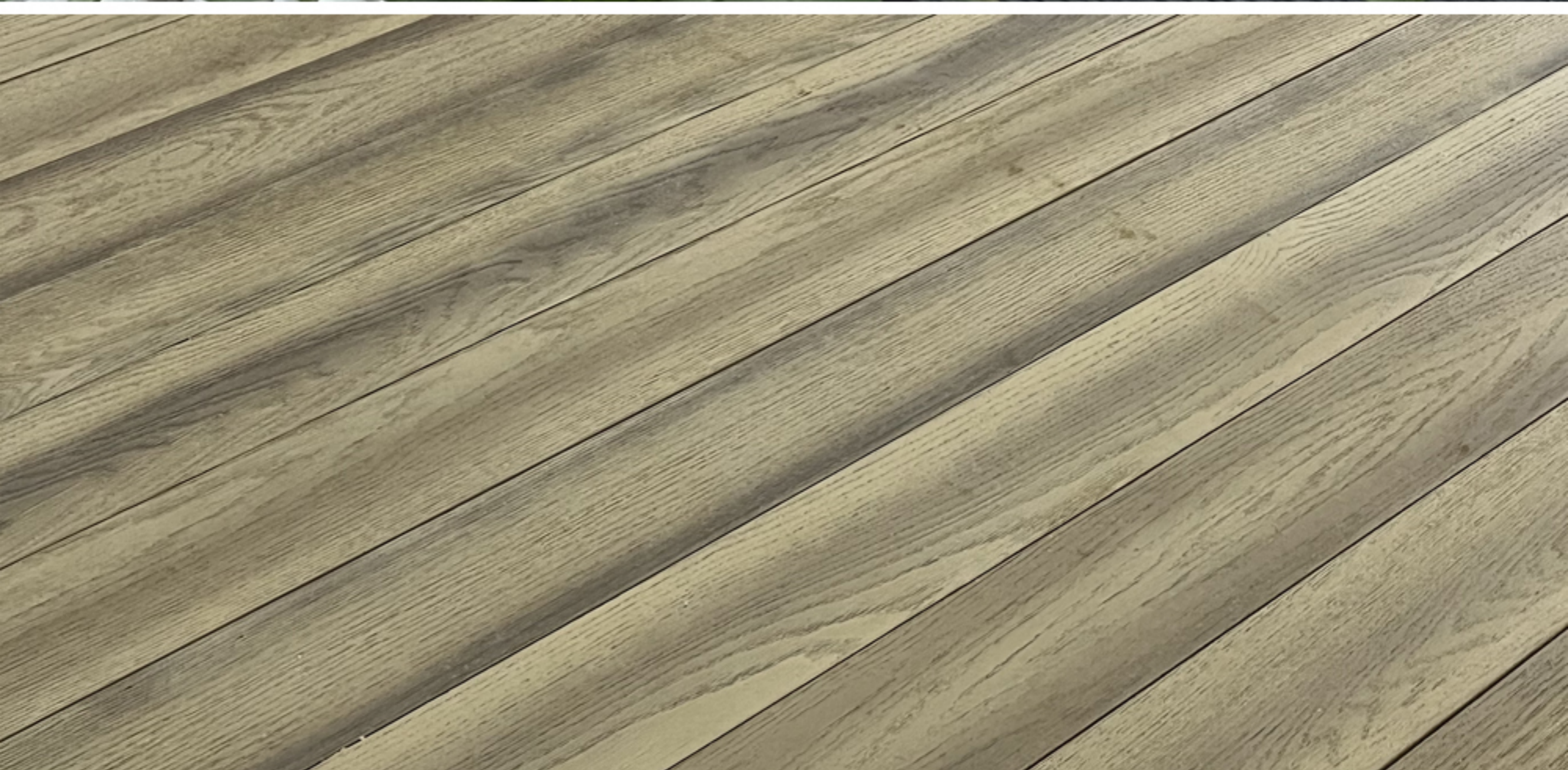
⋮





Rot&Crack resistant

The material is free of plant fibers, which makes it get rid of termites, rot, or fungi issues.
No fiber for core, with less moisture absorption rate to ensure no crack or split happened to your deck.



Friendly to the family, make you can really enjoy your outdoor leisure time

Due to the soft PU material characteristics, the board offers elastic comfortable feeling, which ensure no harmless to Children or drawback to old consumer



ADVANTAGES OF REGALBOARD DECKING



DISTINCTIVE GRAIN PATTERN

Grain moulded from real wood species



RELIABLE DURABILITY

Reinforcement technology tremendously optimised the board mechanical performance



LOW-MAINTENANCE

The look of timber, without the constant upkeep



SLIP RESISTANT

Safer, children and old people friendly



EASY & EFFICIENT INSTALLATION

No clip needed, screw invisible solution



ROT & CRACK RESISTANT

Free of plant fibers, to avoid moisture, termites, mould, fungi



FRIENDLY TO BAREFOOT

Engineered polyurethane material with soft surface



MANUFACTURED WITH SOLAR ENERGY

Art&Craft is fully committed to offering you a product that's green from start to finish

Weathered Grain Collection







Regalboard weathered grain patterns are picked over hundreds of thousands of reclaimed lumber pieces, with the grains been exposed to weather conditions for over 200 years. After meticulously processing, deep and lifelike timber grains are molded and replicated so that the extremely rare, "endangered" but super nice and natural aged grain patterns can be reproduced and applied in the backyard.



With our weathered grain patterns, we devote to delivering a distinctive, stunning and long-lasting decking that may extend your outdoor space with wild beauty scenario.



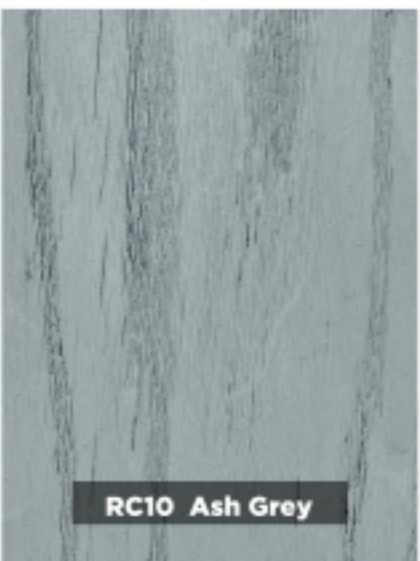
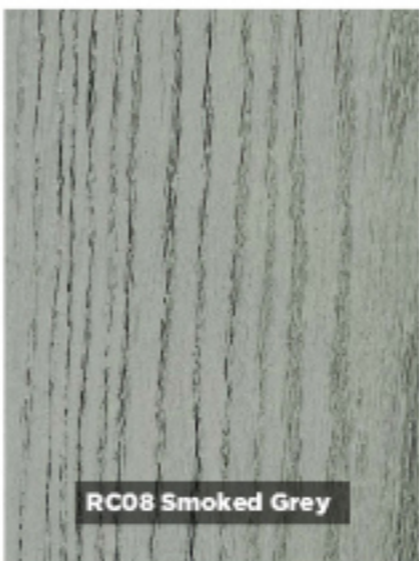


Thanks to the rigid core with reinforcement technology and special engineered soft capping technology, Regalboard weathered grain board offers the awesome durability for longer serving life and the most incomparable aesthetic looks in composite industry.



COLOR

Inspired by natural timber tones, Regalboard is able to carry out delicate deckings with both natural grain appearance and vivid color options. Up to your preference, Regalboard is always ready to offer distinctive customized designs with great pattern and color flexibility.



FINISH (part of non-repeatness grain patterns)



Refined Grain Collection



Weathered Grain Collection

PROFILE

Decking board with Refined Grain (175*22mm)



RC01



RC02



RC03



RC03X



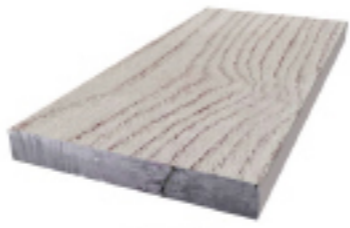
RC04



RC06



RC08



RC09



RC10

Trim Board (185.5x16mm)



RC01



RC02



RC03



RC03X



RC04



RC06



RC08



RC09



RC10

Decking board with Weathered Grain (175*24mm)



RC01



RC02



RC03



RC03X



RC04



RC06



RC08



RC09



RC10

Edge Board (48x22mm)



RC01



RC02



RC03



RC03X



RC04



RC06



RC08



RC09



RC10

More RegalBoard, Less Waste

*Turn the waste to wealth

Our RegalBoard core material is with more than 30% recycled PVC material from wasted SPC flooring, window/door frames and etc. These wasted PVC material are ground and then turned into a mechanical blend to be reused for extrusion. Every 1000kg RegalBoard you bought means a 300kg PVC waste material recycled



*Recyclable product, sustainable and eco-friendly



90% of our RegalBoard material is recyclable, which can be collected and reprocessed for reuse to achieve sustainable and eco-friendly product circle life.

Recyclable, Sustainable

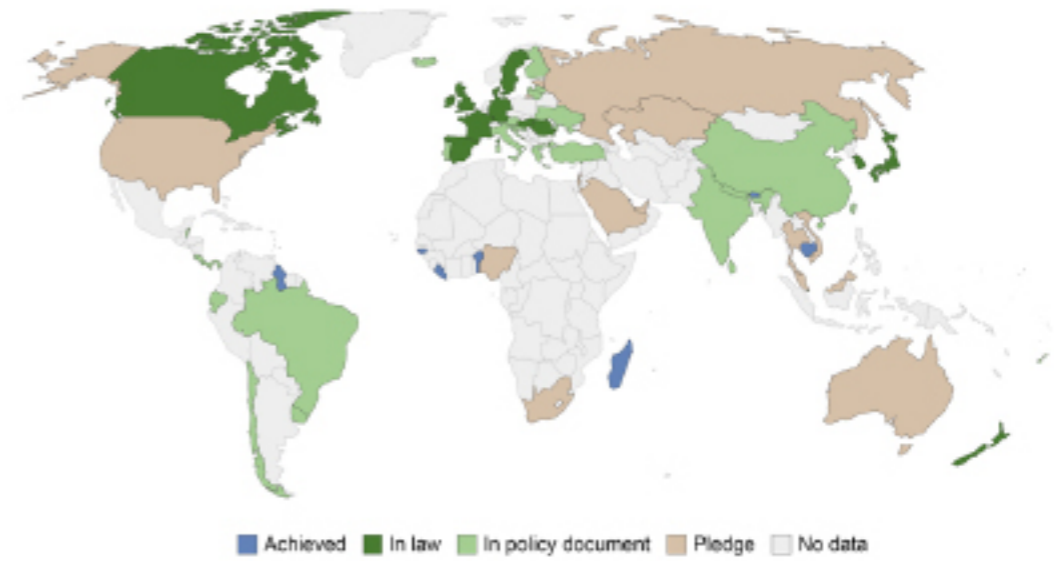
More RegalBoard, Less Carbon Emission

The world has come a long way on climate crisis, although over the last several years, we have seen governments around the world desperately grappling with the development right and carbon emission commitment, the COP26 ensures most of the world is now covered by Net Zero Carbon Emissions commitment. The following are some of the main economies' Net-Zero Target,

- China, Carbon Neutrality in 2060, written in government policy document
- USA, in 2050, pledge
- UK, in 2050, in law
- Germany, in 2045, in law
- France, in 2050, in law
- South Africa, in 2050, pledge
- Australia, in 2050, pledge
- Brazil, in 2060, in policy document
-

Status of net-zero carbon emissions targets

The inclusion criteria for net-zero commitments may vary from country to country. For example, the inclusion of international aviation emission; or the acceptance of carbon offsets.



Source: Net Zero Tracker, Energy and Climate Intelligence Unit, Data-Driven EnviroLab, New Climate Institute, Oxford Net Zero. Last updated: 2nd November 2021. Our World in Data.org/co2-and-other-greenhouse-gas-emissions - CC BY

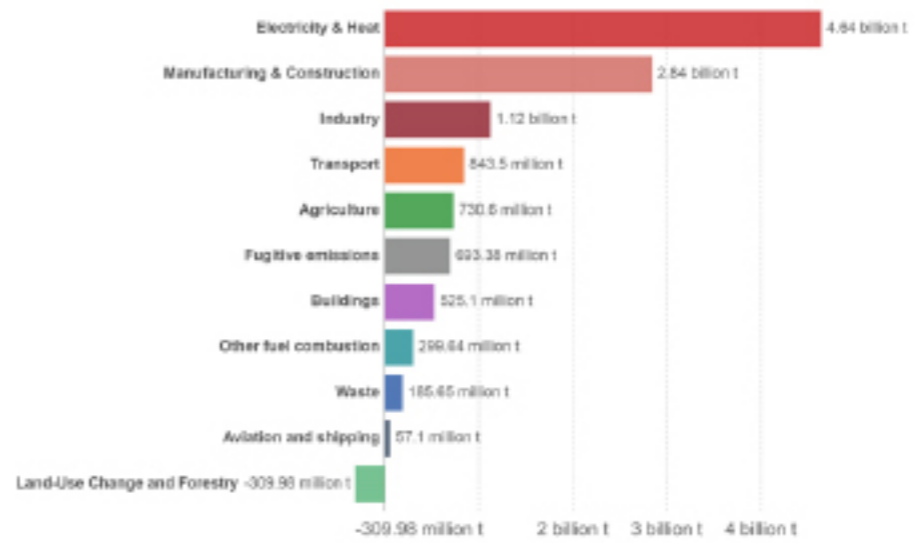
This is an ambitious programme and commitment, which needs every single one of us to be involved to better fulfill it. As a Community of Shared Future for Mankind, we need to have action on energy saving, carbon emission mitigation, promoting circular economy with sustainable, recyclable product.

Green energy, green development

From the right data, it indicates that the main carbon emissions are from the electricity/heat production and manufacturing/construction sectors. Thus, in pursuit of true sustainable development, Sentai built solar panels with an area of about 135,000 square meters on the plant's roof, which can generate 46,000 kiloWatt-hour electricity on a daily basis, which is equivalent to 43 tons of CO₂ emissions per day by coal. The solar panels generated green and clean power were used to feed the machines to extrude our RegalBoard, just with the aim of leaving less carbon footprint and create a greener development.

Greenhouse gas emissions by sector, China

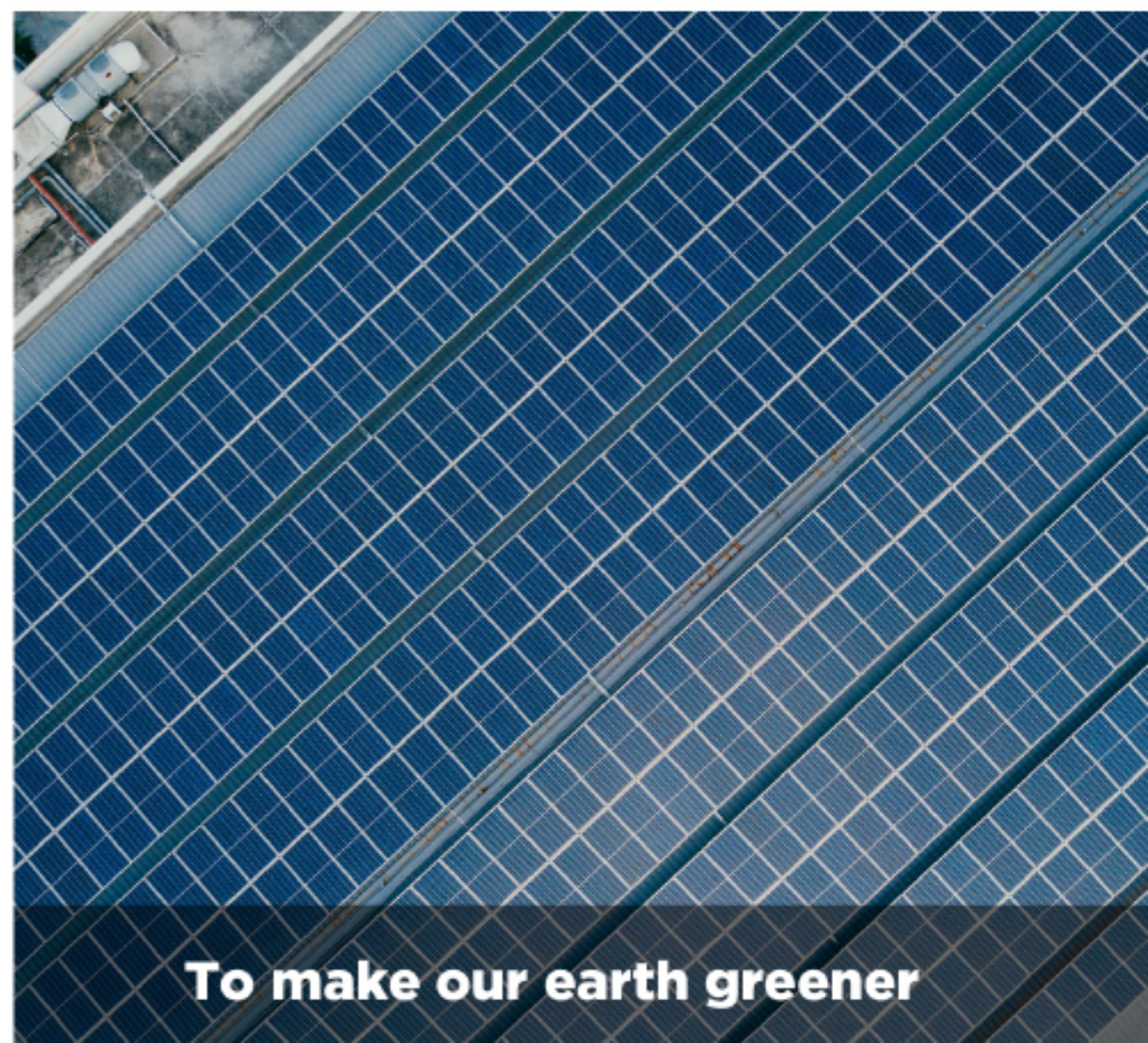
Greenhouse gas emissions are measured in tonnes of carbon dioxide-equivalents (CO₂e).



Source: CAIT Climate Data Explorer via Climate Watch Our World Data.org/co2-and-other-greenhouse-gas-emissions - CC BY



Solar power in SENTAI



To make our earth greener



More RegalBoard, Less Deforestation

"As recently as the 19th century tropical forests covered approximately 20 percent of the dry land area on Earth. By the end of the 20th century this figure had dropped to less than 7 percent..."

We endeavored to harvest less forest and keep our planet greener. Thus wood replacement material RegalBoard was developed. Now every 1000kg RegalBoard we produced is equal to save one and half 30-year-old eucalyptus trees, and will reduce 1 m³ deforestation.

Replace the wood, reduce the deforestation

Mechanization in the form of chain saws, bulldozers, transportation, and wood processing has enabled far larger areas to be deforested than was previously possible. So it's really easy to fell the forest, but if you agree with us, please join us to have action for deforestation.

More RegalBoard, Less Deforestation.





Worldwide Leading Composite Manufacturer

www.sentaipc.net

Add: #6, Guohua Road, Economic and Technological Development Zone of Guangde County, Anhui Province, China, 242000
Tel: +86 563 6767353
Email: info@sentaigroup.com